





THE BALTIMORE GONDOLA

Revolutionizing Urban Transportation





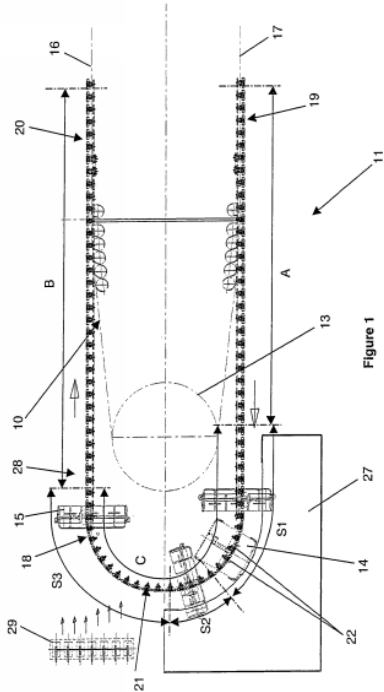
Baltimore's Transit Woes

- Capacity **exceeded** on existing street grid
- **Disconnected** public transit options
- ~~— REDLINE —~~
- Overly **complicated**
- Basically **unreliable**



How It Works

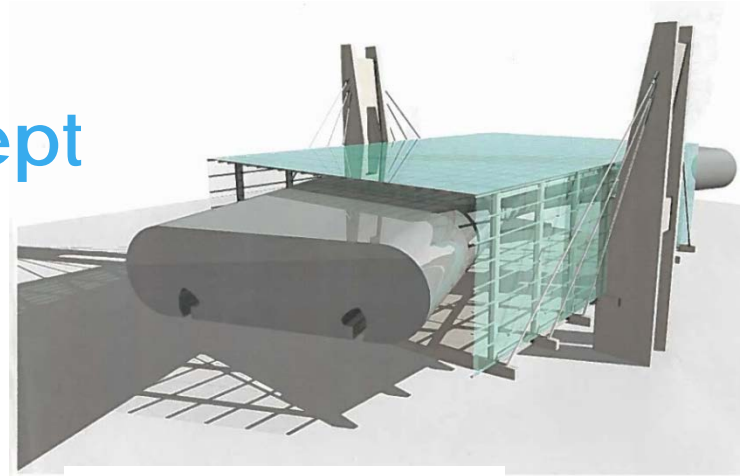
- Detachable cabins
- No headways
- Cable speed – 12mph
- Electric Power – 800hp motor
- Masts carry cables above streets
- Elevated minimalistic stations





Gondola Operating Concept

A Gondola is waiting for you



BROTHERS ENVISION GONDOLA AT HARBOR

Elevated cable cars



Trey Winstead of Winstead Brothers LLC shows off a prototype gondola that would be part of an Inner Harbor from Fells Point to the Convention Center. The journey would take seven minutes. (LORRAINE MIRABELLA/SUN PHOTOGRAPHER)

On cutting edge of urban transit

Baltimore to hear plan for ski-lift-style gondola service

BY LORRAINE MIRABELLA
SUN REPORTER

Picture floating high above Pratt Street in a ski-lift-style gondola, soaring over the Inner Harbor on a seven-minute journey from the Convention Center to Fells Point. Trey Winstead of Winstead Brothers LLC has been studying, planning and engineering such a 1.3-mile route along overhead cables for six years. Now along with his brother Peter, Winstead's brother is ready to pitch the plan to put Baltimore on the cutting edge of urban aerial transit to the city's design panel.

This is sure to be the best new attraction,



Trey and Peter Winstead, partners in Winstead Brothers LLC, want to build a \$30 million aerial gondola system stretching from Fells Point to the Convention Center. The Baltimore LRT would consist of 90 cars that can carry eight people at a time, transporting 5,500 people an hour.

TRANSPORTATION

Will downtown gondola plan fly?

BY JEN DEGRECORIO

Jennifer.degrecorio@mdiajax.com

Trey and Peter Winstead have kept a low profile since they won a state grant last year to further their dream of building a ski-lift-style gondola system around the Inner Harbor.

But the Winstead brothers are back, this time with a professional market study to show skeptics that the Baltimore Lift can fly in Baltimore. If the study is right, a car trip from the downtown convention center to Fells Point could soon be replaced with a seven-minute tram ride in sky.

"That's what we've been doing the last year or so," Trey said.

According to the study, the project, which would cost more than \$30

million, would likely see 1.2 million riders each year. That makes the Baltimore Lift economically feasible, according to the study, funded in part by a \$38,000 state business grant.

The system would consist of 90 cars that can carry eight people at a time, transporting 5,500 people an hour and moving them from one end to the other in about seven minutes, Trey said.



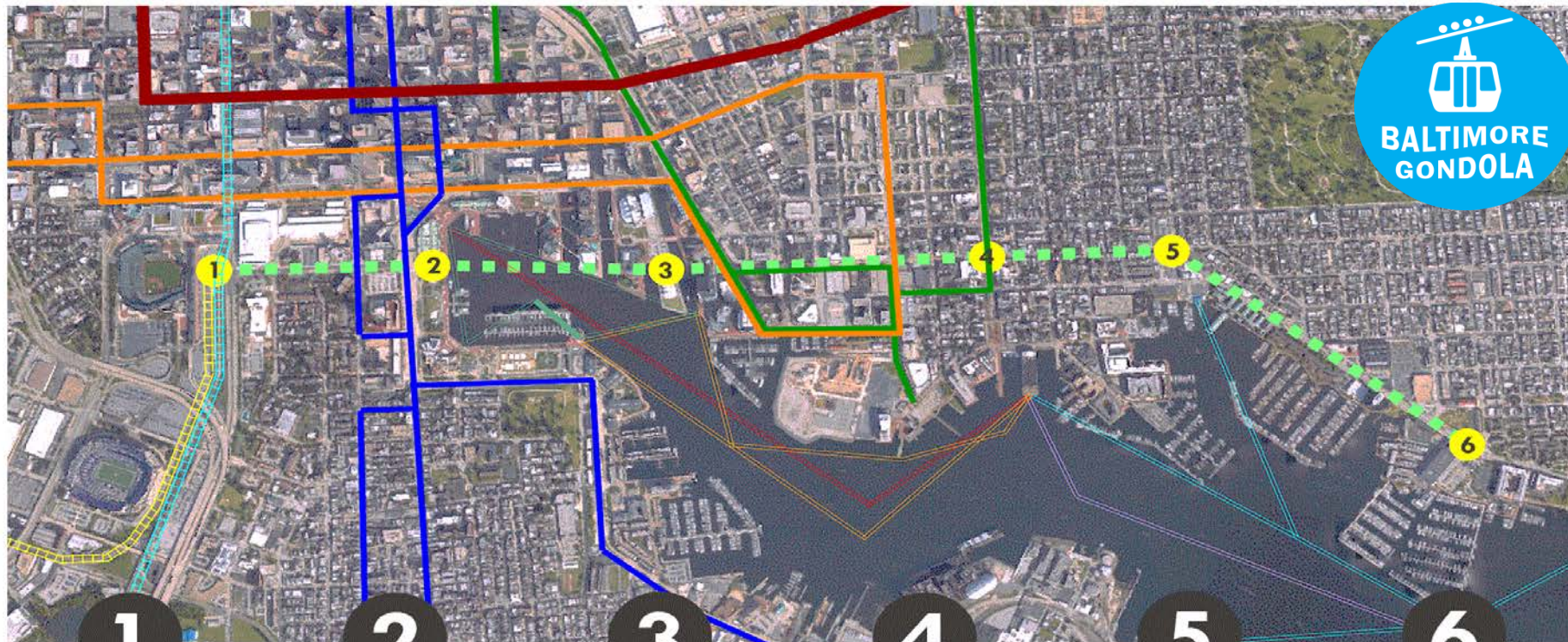
A survey of 1,200 use a gondola system.

Get on board for a gondola flight to Fells Point



KEVIN COWHERD

SO NOW THERE'S TALK OF BUILDING A ski-lift-style gondola system that would whisk visitors high above the Inner Har-



1

**STADIUM CENTRAL
STATION**

CHARM CITY CIRCULATOR
Orange - 2 blocks
LIGHT RAIL
Transfer
MARC TRAIN
Transfer
METRO
Less than 4 blocks

2

**DOWNTOWN INNER
HARBOUR**

CHARM CITY CIRCULATOR
Purple - less than 1 blocks
Banner - less than 1 blocks
WATER TAXI
2 Routes - less than 1 blocks
METRO
Less than 4 blocks

3

INNER HARBOUR EAST

CHARM CITY CIRCULATOR
Orange - 1 blocks
Green - 1 blocks
WATER TAXI
Orange - 1 blocks
Green - 1 blocks

4

**FELLS POINT
BROADWAY**

CHARM CITY CIRCULATOR
Green - Transfer
Orange - 3 blocks
WATER TAXI
Blue - 2 blocks
Purple - 2 blocks
Orange - 2 blocks
Green - 2 blocks

5

FLEET STREET

WATER TAXI
Blue - 1 block

6

CANTON

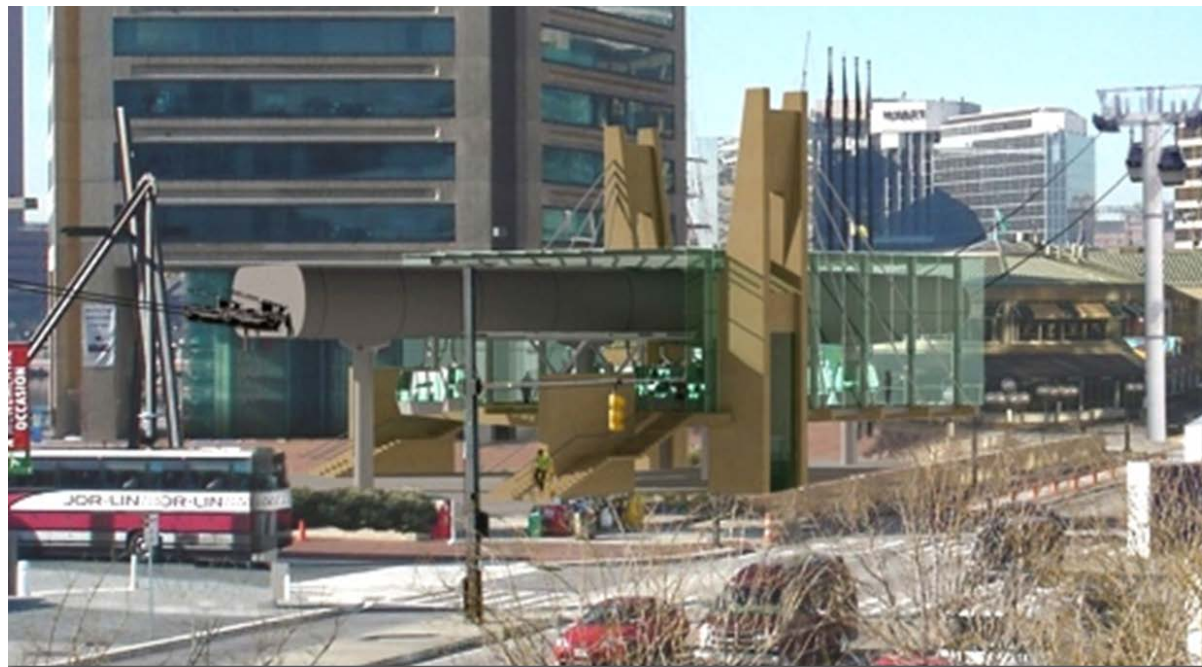
BOSTON STREET WATER TAXI
Blue 2 - blocks
I-95 PARK AND RIDE



Leitner-Poma Partnership

- Exclusive Partnership
- 20 year relationship
- Rick Spear, President
- Tom Clink, Operations
- Alain Lazard, Special Projects

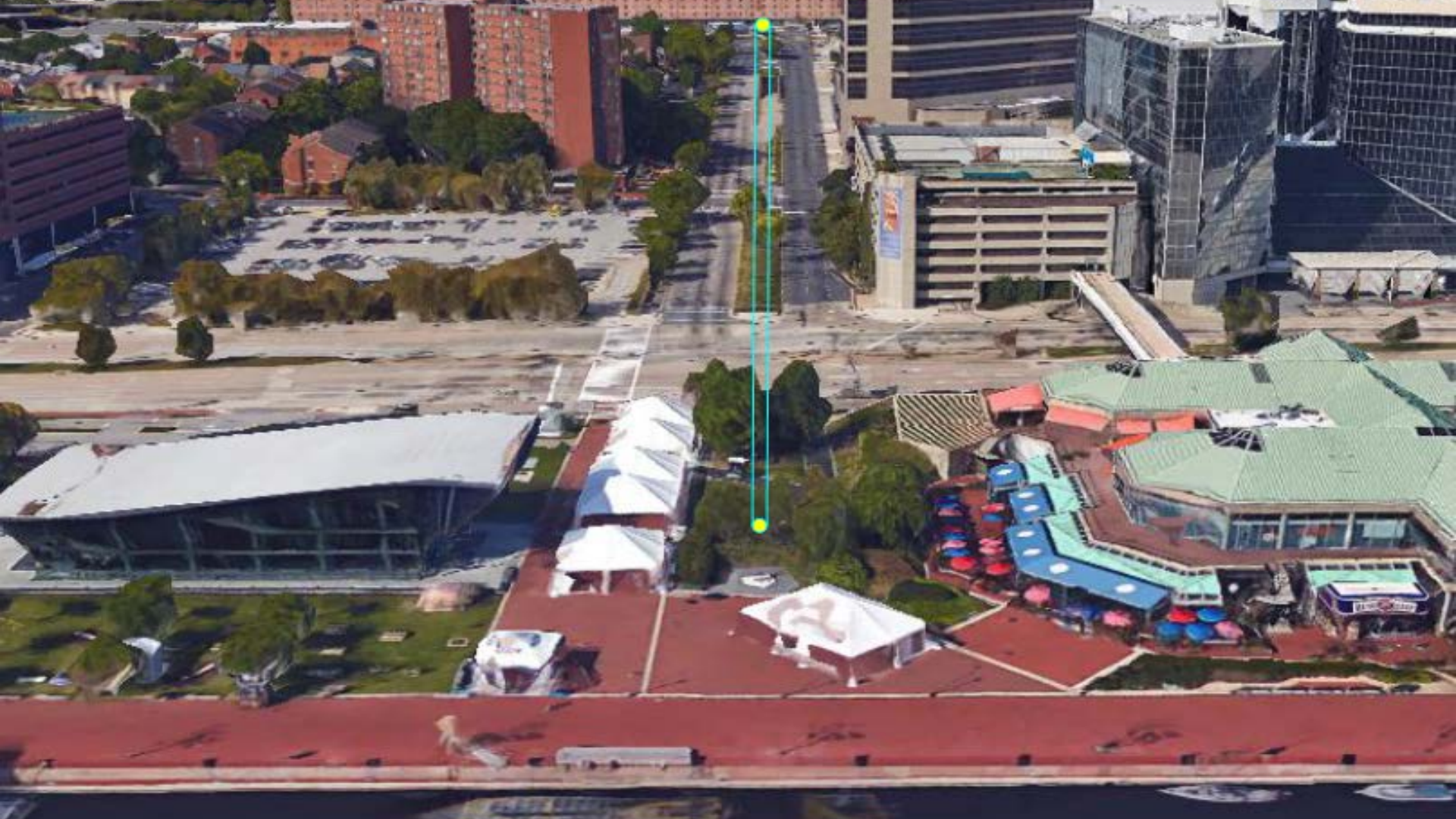
Station Rendering



1

Stadium Central Station





2

Downtown Inner Harbor





Data SIO, NOAA, U.S. Navy, NGA, GEBCO
Image Landsat

Google earth

3

Harbor East





Image Landsat

Google

4

Fells Point @ Broadway





Data SIO, 2000, U.S. Dept. of Transportation

5

Fleet & Boston





Image Landsat

6

Canton





Image Landsat



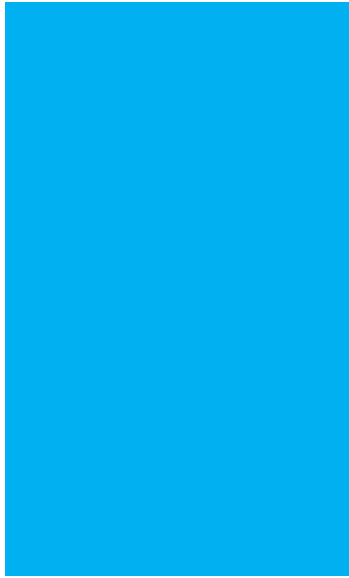
Alternate Route Options

- Pratt Street as alternate to harbor crossing
 - Howard to President Street
- President Street
 - Pratt to Fleet Street
 - Station at President and Fleet (in lieu of Pier 6)
- Harbor Point Link
- Convention Center/Stadium to Port Covington Link



Transit Choices

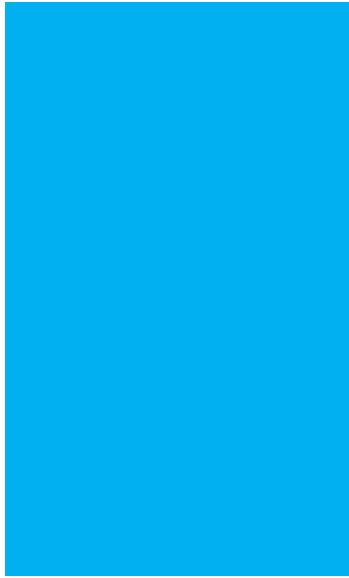
Mode	Time	Cost
Baltimore Gondola	14 minutes	\$10 Tourist \$3 Resident ALL DAY
Biking	20 minutes	Free
UBER – Car - Taxi	15 - 45 minutes	\$5 - \$26 per ride
Water Taxi	40 minutes	\$14 ALL DAY
Walking	Up to an hour	Free



Growing Modern Mode of Urban Transportation

LEITNER[®]
ropeways

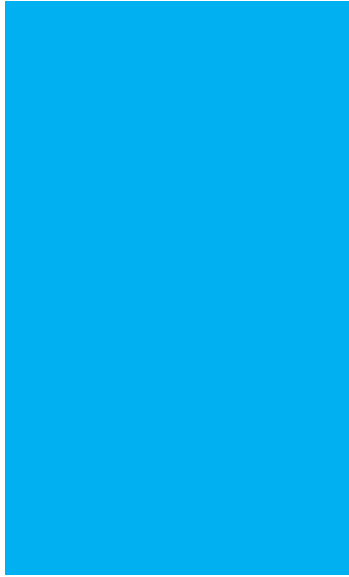
POMA



Roosevelt Island (1976)

Commuter connection from Manhattan to Roosevelt Island

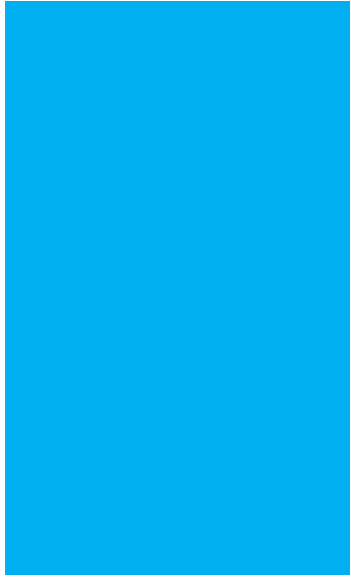
30 Million Riders since operation began – only 12,000 residents on island



Medellin - Metro Cable (2005)

First gondola in the world fully devoted to public transit

15 million riders per year... 3 lines built... 2 under construction.....locals ecstatic!



Portland Aerial Tram (2006)

Connecting Historic OHSU to Waterfront

Crosses over interstate I-5... extremely popular and fun... "what a commute"...

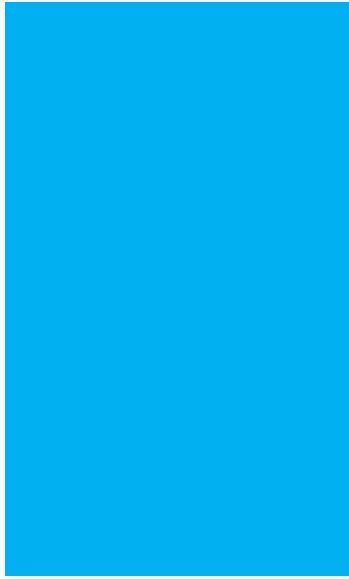


Complexo do Alemão (2011)

6 Stations - Bonsucesso, Adeus, Baiana, Alemão, Itararé/Alvorada and Palmeiras

2.2 Mile Route... 152 Cabins... 16 Minutes



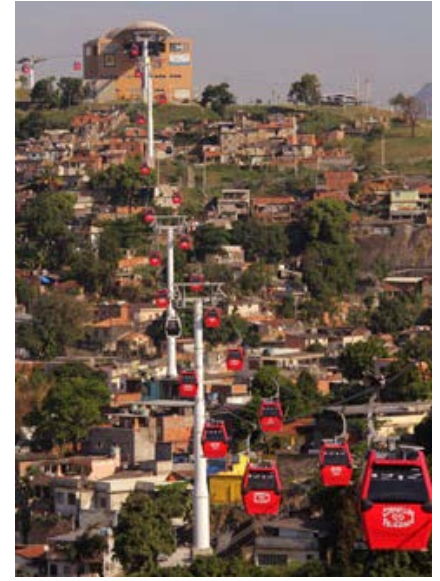
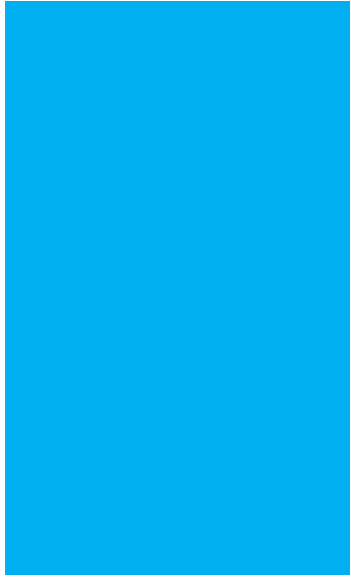


London – Air Line (2012)

Over Thames River

Over 1.5 million riders in first 6 months





Rio de Janeiro (2013)

"This project has two roles. The first is to serve the population of the hill. Another role is to attract tourists," Rio's Mayor Eduardo Paes told reporters.

2.1 Mile Route - Over 30,000 riders per day





SKYWAY

Gondolas in Development





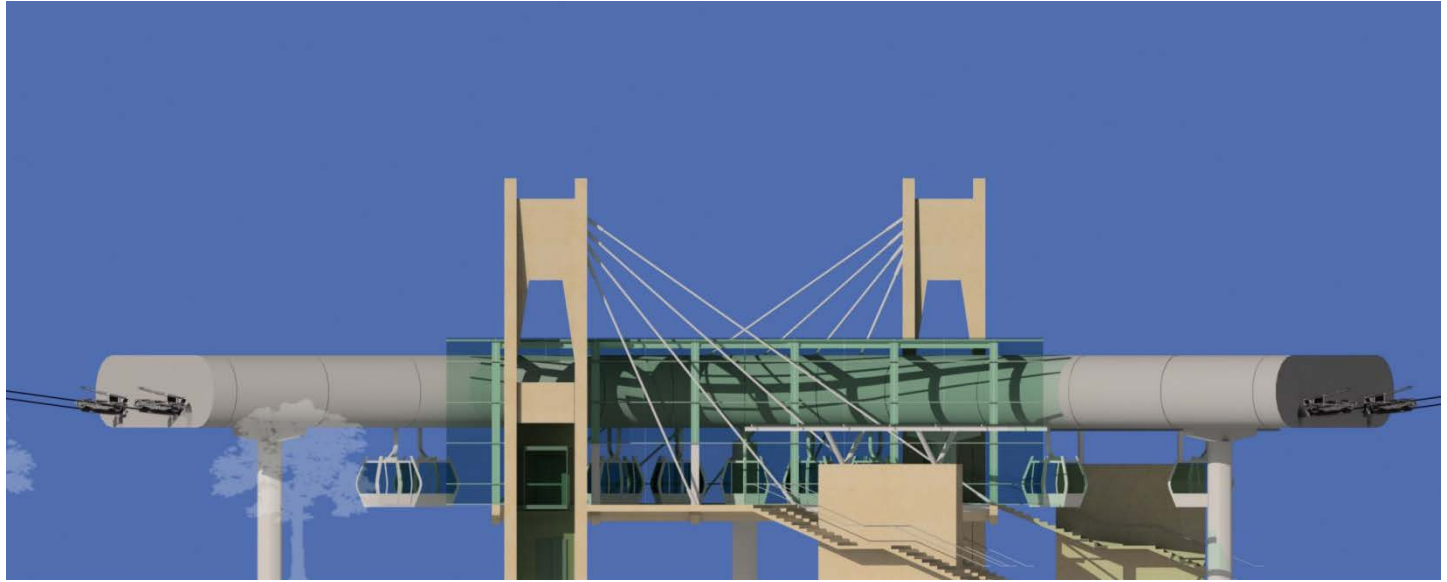
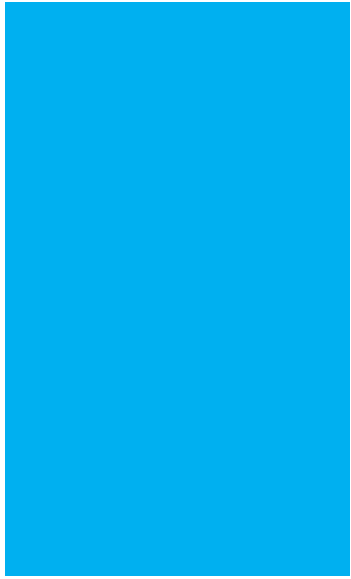
Cities Pursuing Gondolas

- Georgetown Gondola to Rosslyn, VA
 - Over Potomac River – RFP Issued
- Chicago Skyline
 - Navy Pier to Millenium Walk and RiverWalk
- East River Skyway
 - Connects Willamsburg, Brooklyn to Manhattan
- Baltimore Gondola
 - **Connects Canton to Fells to Harbor East to Inner Harbor to the Stadiums and Convention Center**



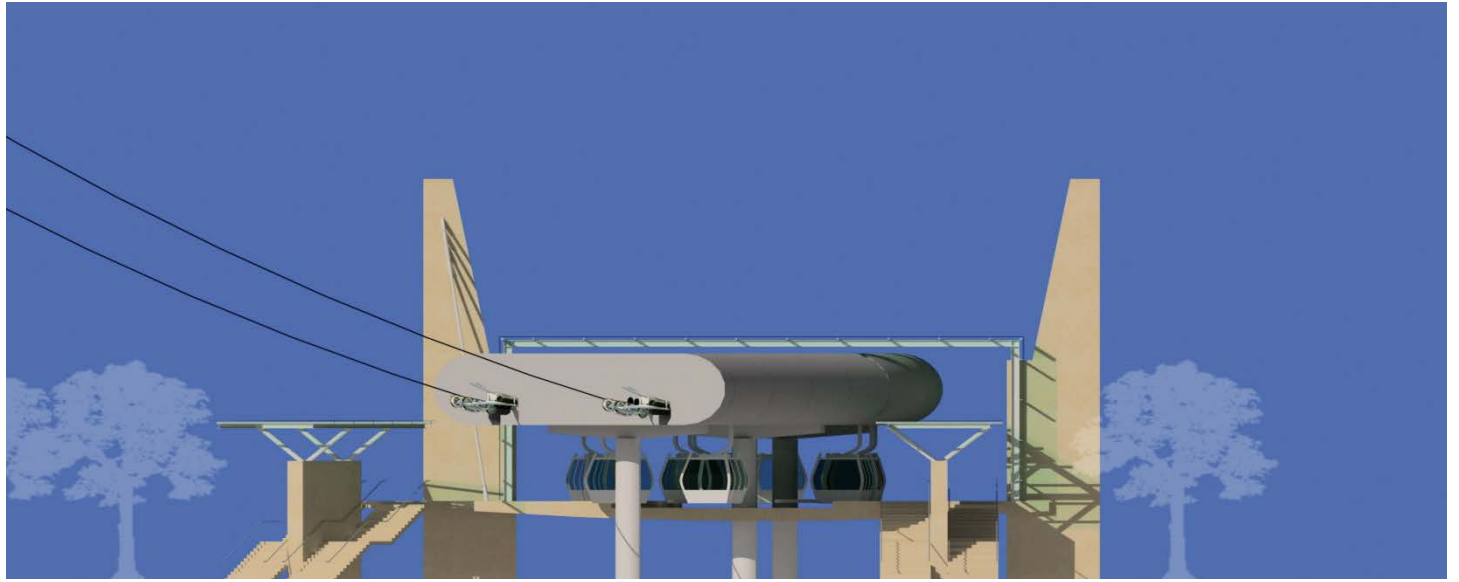
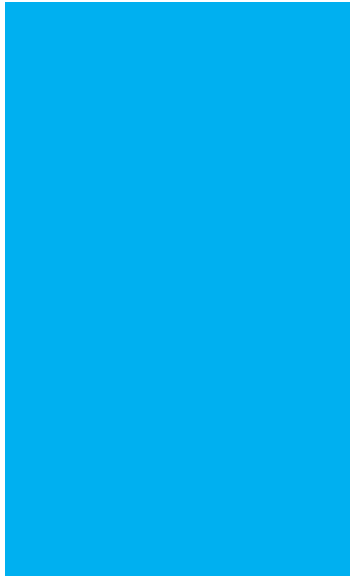
Fun Facts

- World's safest travel mode
- Most dependable form of transit
- 99.97% Reliability
- Weather independent
- Always cabins loading in every station
- Raises property values near stations (TOD)
- THE **NEW** NEW THING



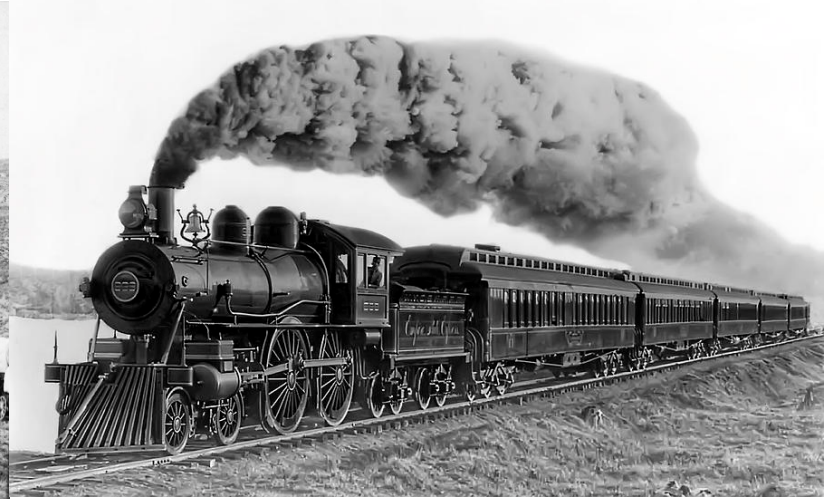
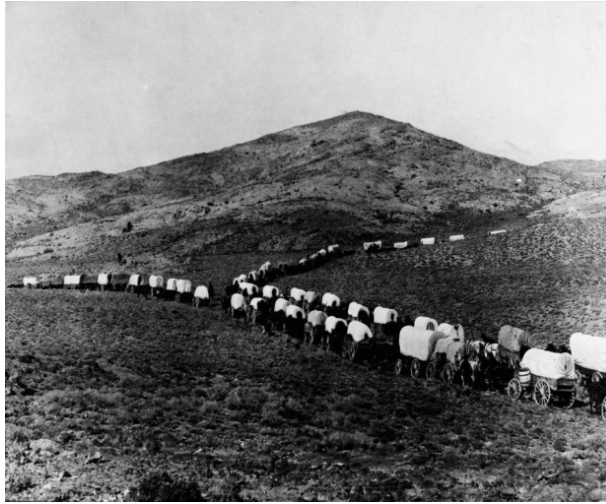
STATION ELEVATION

- Adaptable
- Visually appealing



STATION ELEVATION

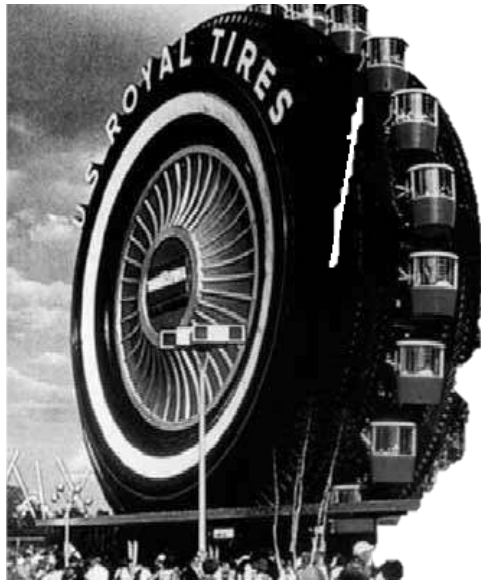
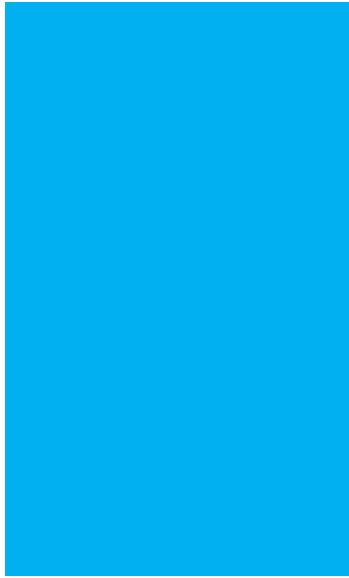
- Light
- Designed to fit environment



Sustainable Transportation

- Single 800HP electric motor
- Reduces vehicular traffic
- Solar panels on stations power system
- Reduces pollution in Chesapeake Bay





A NEW BALTIMORE LANDMARK BENEFITS FOR THE CITY AND ITS CITIZENS

One of a Kind Attraction while serving CITY RESIDENTS

- Gondolas and trams attract visitors
- Connects attractions and neighborhoods
- Breathtaking views of Baltimore City and Inner Harbor
- Gondola largely financed through tourism to provide reduced fares for residents



Baltimore Gondola Team

- Trey Winstead, Baltimore Gondola Founder
 - Civil Engineer, Project Manager
- Nate Pretl, Baltimore Gondola Partner
 - Urban Development Professional
- Peter Wertheimer, Business
- Chris Barnhill, Strategy
- Matt Tucker, Counsel



Next Steps

- Developing Partnerships
 - Transit Choices, Downtown Partnership, GBC, Exelon, Harbor Point, Local Developers, Architects and Planners
- Baltimore City Officials
 - 1st and 11th District Councilman
 - Mayor
- Studies and Surveys
 - Update Kittelson Report
 - Hopkins Carey School Interns
 - Grant Applications



WHY NOT BALTIMORE?

WHY NOT NOW?

Better Transit Stronger Tourism

EXPANDABLE?

In all Directions

