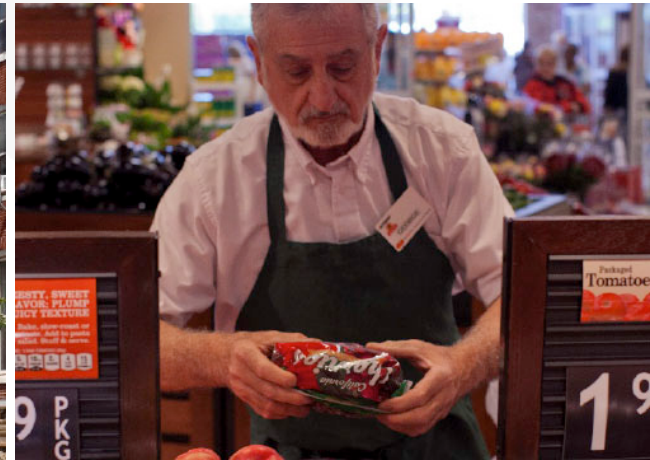
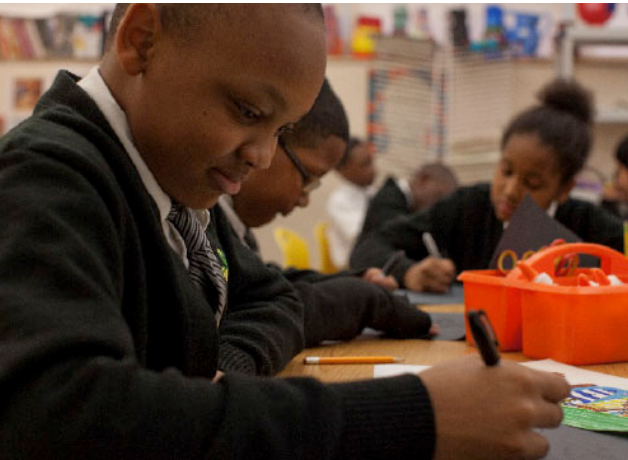




REINVESTMENT
FUND



Reinvestment Fund

Dana Johnson, Managing Director | May 2017

About Reinvestment Fund

- A certified **Community Development Financial Institution (CDFI)** - a specialized financial institution that works in markets that are underserved by traditional financial institutions.
- Certified by the US Treasury Department – assessed for our mission, financing activity and accountability.
- CDFI certification is a requirement for accessing financial and technical award assistance from the US Treasury's CDFI Fund.

About Reinvestment Fund

\$1.9 billion in community investments

\$950 million of capital under management

850 individual & institutional investors



REINVESTMENT
FUND

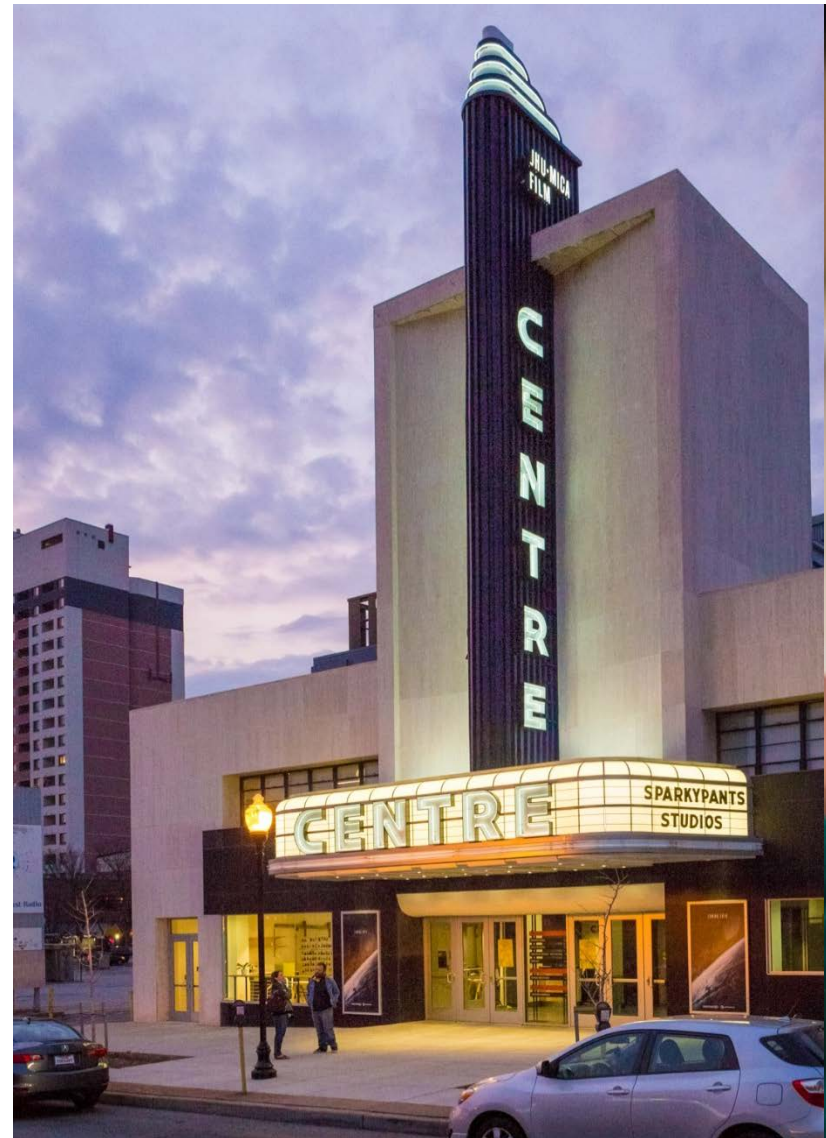
Capital at the Point of Impact

Reinvestment Fund is a catalyst for change in low-income communities.

We integrate data, policy and strategic investments to improve the quality of life in low-income neighborhoods.

Using analytical and financial tools, we bring high-quality grocery stores, affordable housing, schools and health centers to the communities that need better access.

These anchor projects help attract investment over the long term and help families lead healthier, more productive lives.



REINVESTMENT
FUND

Lending & Investing

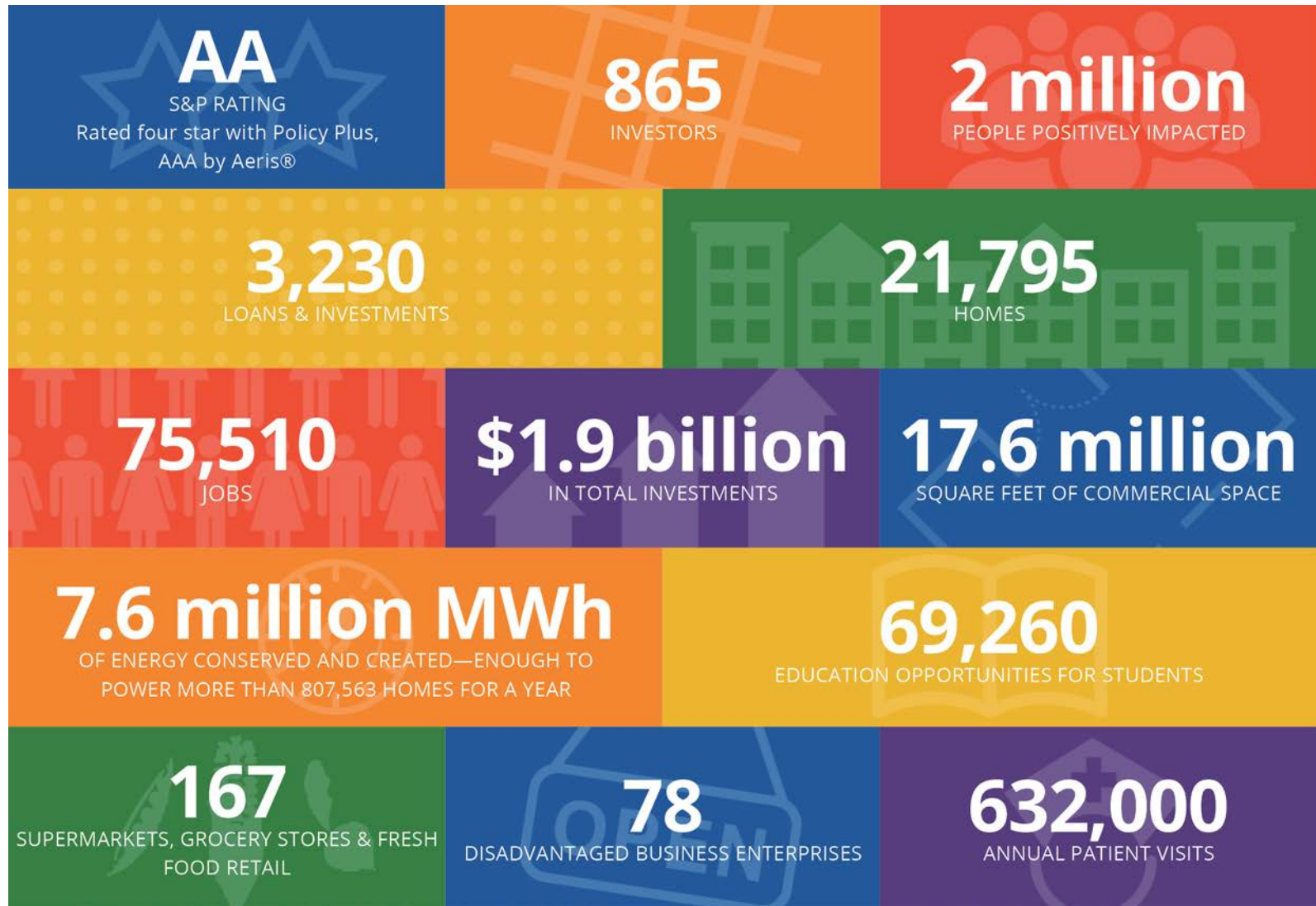
We finance a variety of projects and activities including:

- Food Access
 - Grocery retail
 - Distribution centers
 - Value chain businesses
- Health Care
 - Community health centers
- Education
 - Charter schools
 - Early childhood education centers
- Housing
 - Single-family homes
 - Multi-family homes
 - Vulnerable populations



REINVESTMENT
FUND

Our Impact in Numbers

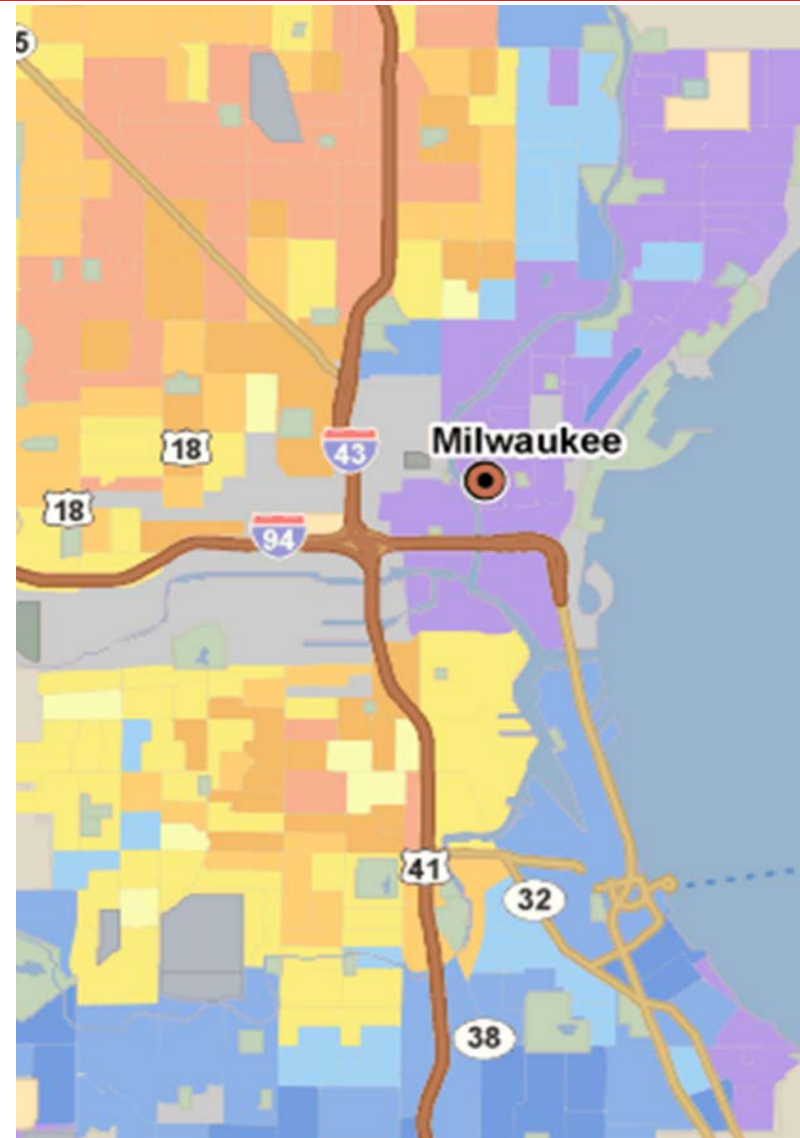


REINVESTMENT
FUND

Policy Solutions

A division of Reinvestment Fund that combines rigorous data analysis with a distinctive ability to help clients think spatially.

- Real Estate Market Analysis
 - Market Value Analysis (MVA)
 - Limited Supermarket Access (LSA)
 - Commercial corridors analysis
 - Foreclosure analysis and prevention strategies
- Program & Social Impact Assessment
 - Estimating Childcare Access, LSA, School Lunch Analysis, Grantmaker Advisory

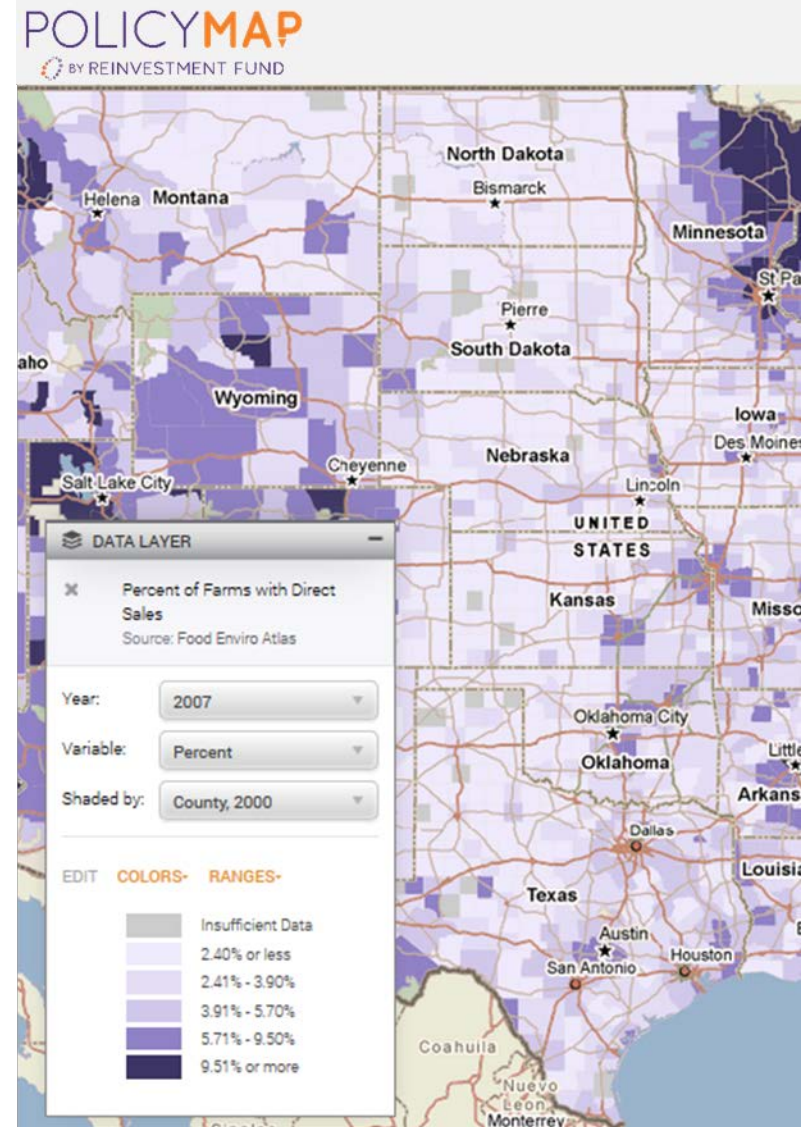


REINVESTMENT
FUND

PolicyMap

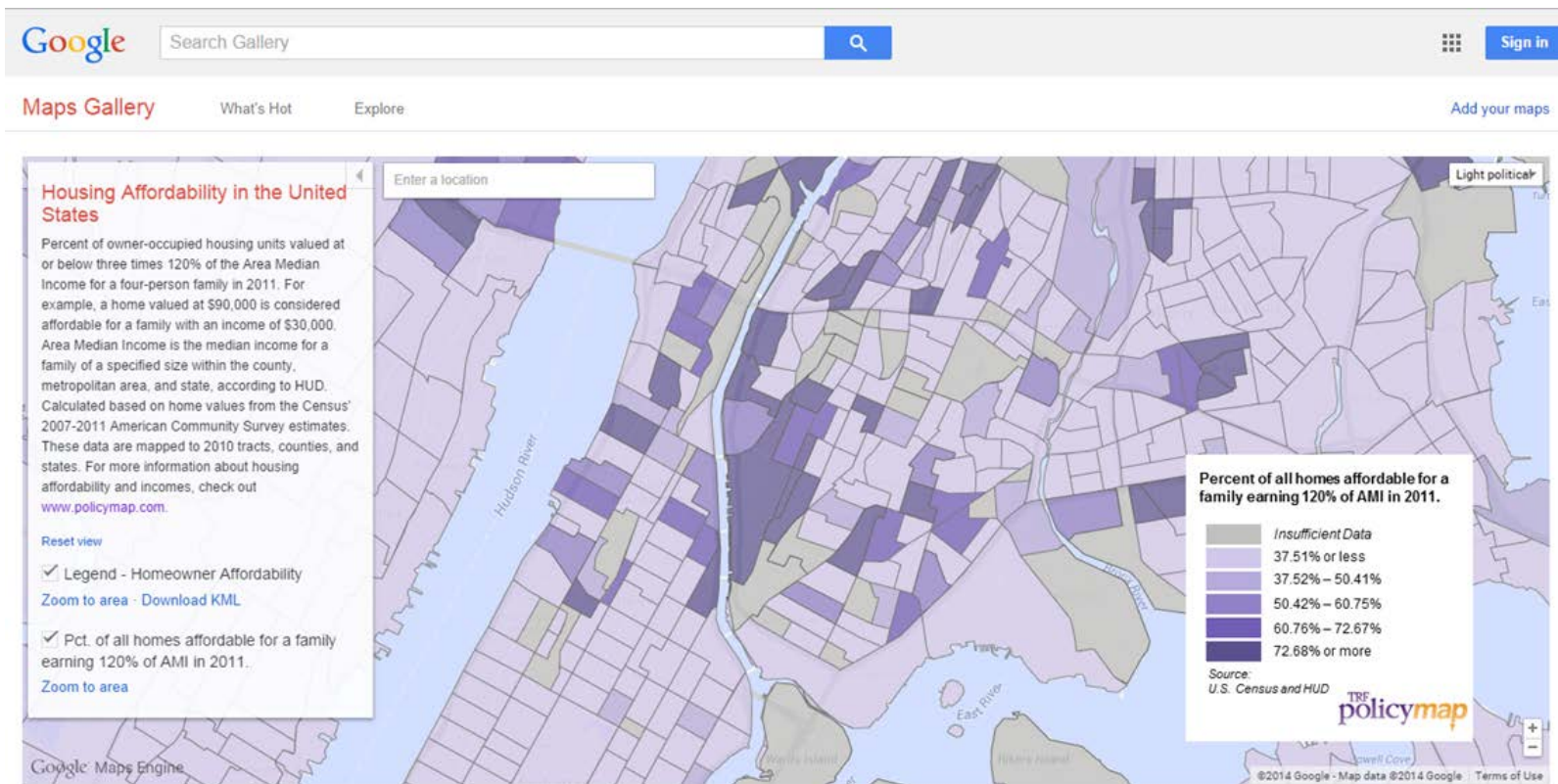
Reinvestment Fund's PolicyMap enables government, commercial, non-profit and academic institutions to access data about communities and markets across the US.

- National data mapping and analysis tool
- Easy, online access to data and analytical tools in a sophisticated yet user-friendly web platform
- Over 37,000 data indicators as well as proprietary Reinvestment Fund analytics, with frequent additions
- CNET award winner for best of location-based services Web 2.0 products



PolicyMap in Numbers

- 37,000 data indicators
- 38,000 users
- 769 subscriptions
- 38 site licenses
- 14 data API
- 21 custom developments
- 30 widgets



PolicyMap: Diverse Customer Network



Maryland Investments to Date: >\$160 million

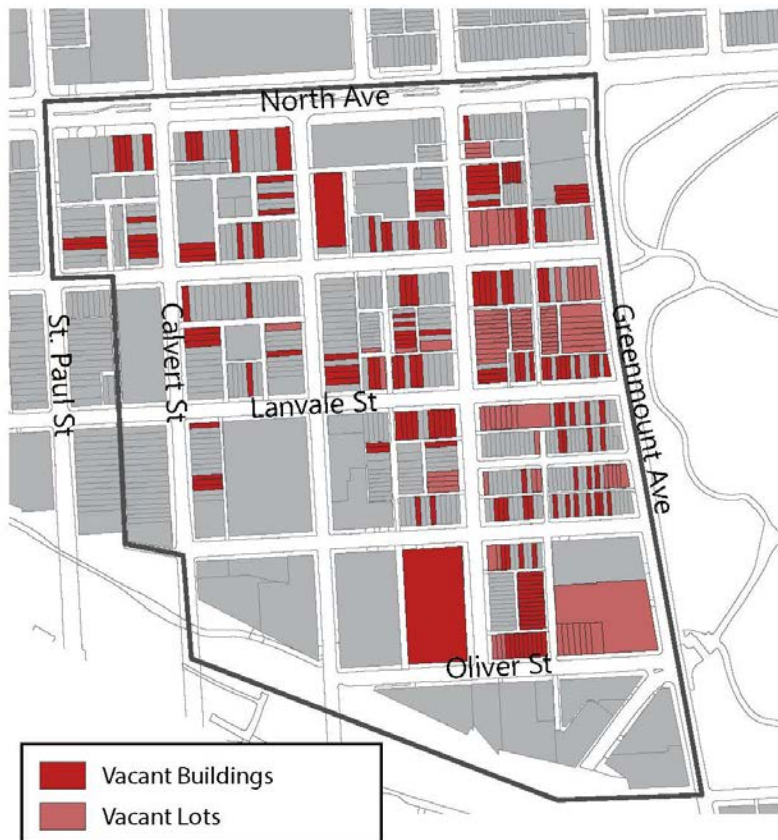


REINVESTMENT
FUND

TRF Development Partners

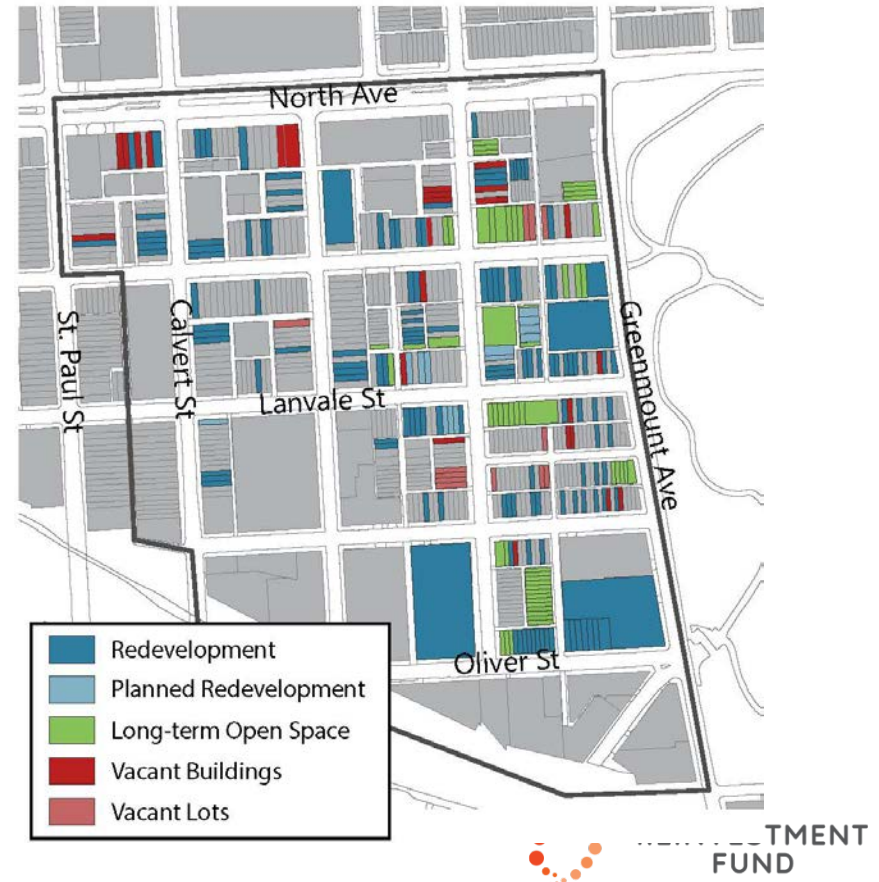
Greenmount West 2009

- Vacant Building 175
- Vacant Lots 97
- Total Vacant 272



Greenmount West 2016

- Vacant Building 12
- Vacant Lots 25
- Total Vacant 37



TRF Development Partners

Oliver/Middle East 2009

Vacant Building	268
Vacant Lots	213
Total Vacant	481



Oliver/Middle East 2016

Vacant Building	14
Vacant Lots	16
Total Vacant	30



Current Initiatives

Local

- Baltimore Energy Initiative
- MD Food Financing
- Creative Placemaking
- Central Baltimore Future Fund

National

- BGP
- Invest Health
- Bond issuance
- Refresh
- ATL expansion



Dana Johnson, Managing Director

410-783-1110

@www.reinvestment.com | @ReinvestFund



**REINVESTMENT
FUND**