

# Baltimore Greenway Trails

JEFF LA NOUE

June 14, 2021





# Baltimore Greenway Trails



[Plan Content](#) [Cross Cutting Themes](#) [Interactives](#) [Implementation](#) [Library](#)





# Baltimore Greenway Trails



Station at Manayunk



# Baltimore Greenway Trails

<https://www.visitgreenvillesc.com/about-greenville/>

# of trails scenes

# of T(rail)OD

# of places that could be reached by trails

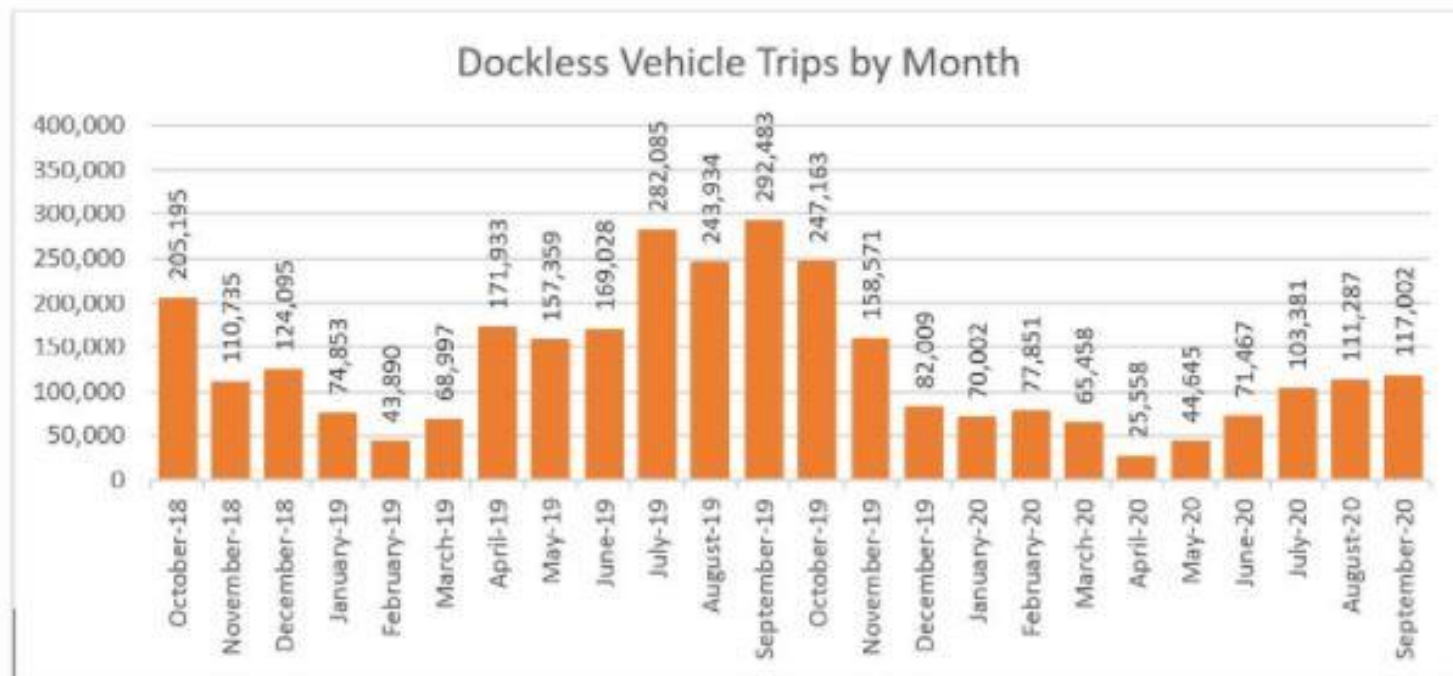




# Baltimore Greenway Trails

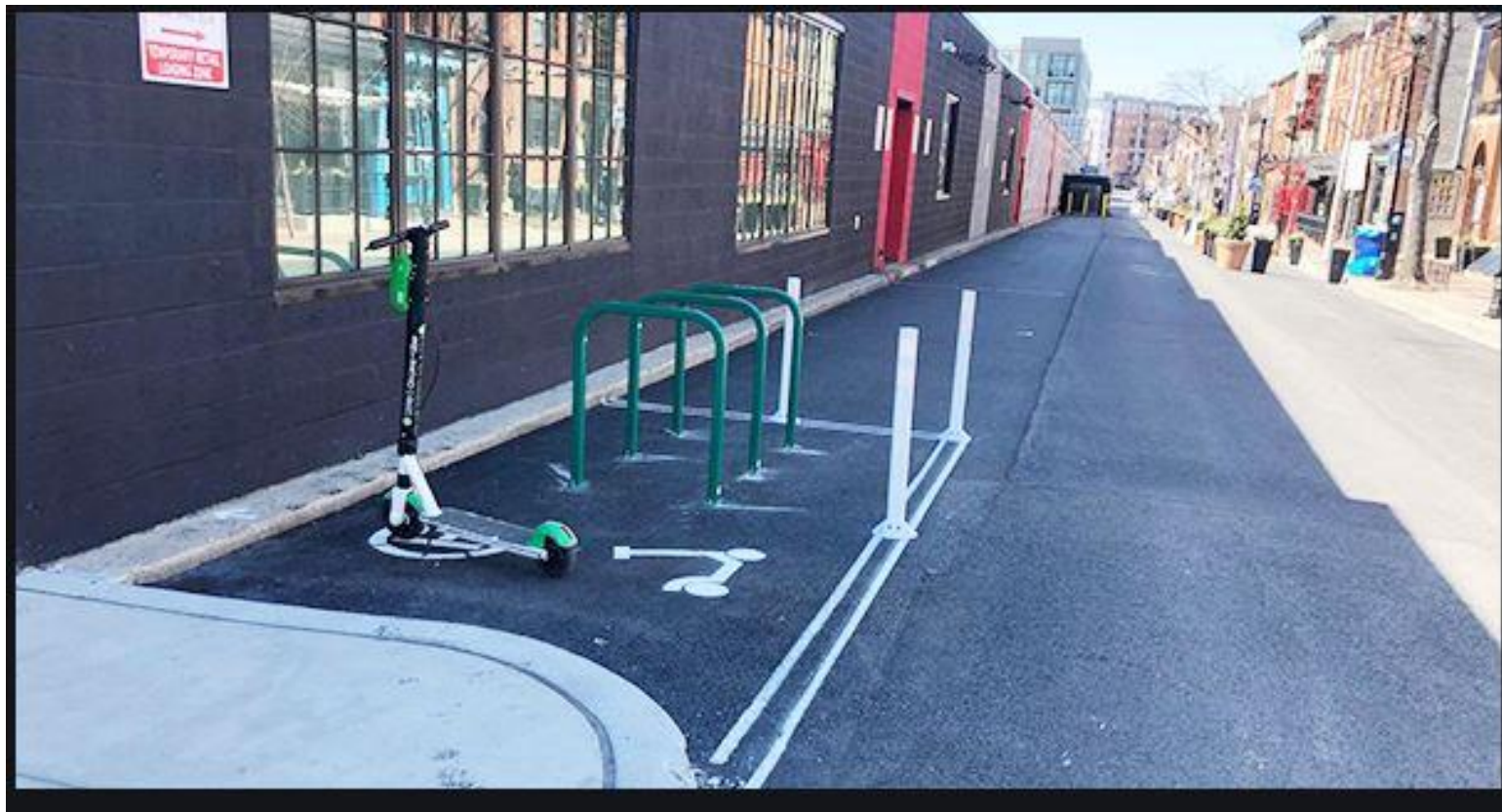


# Baltimore Greenway Trails



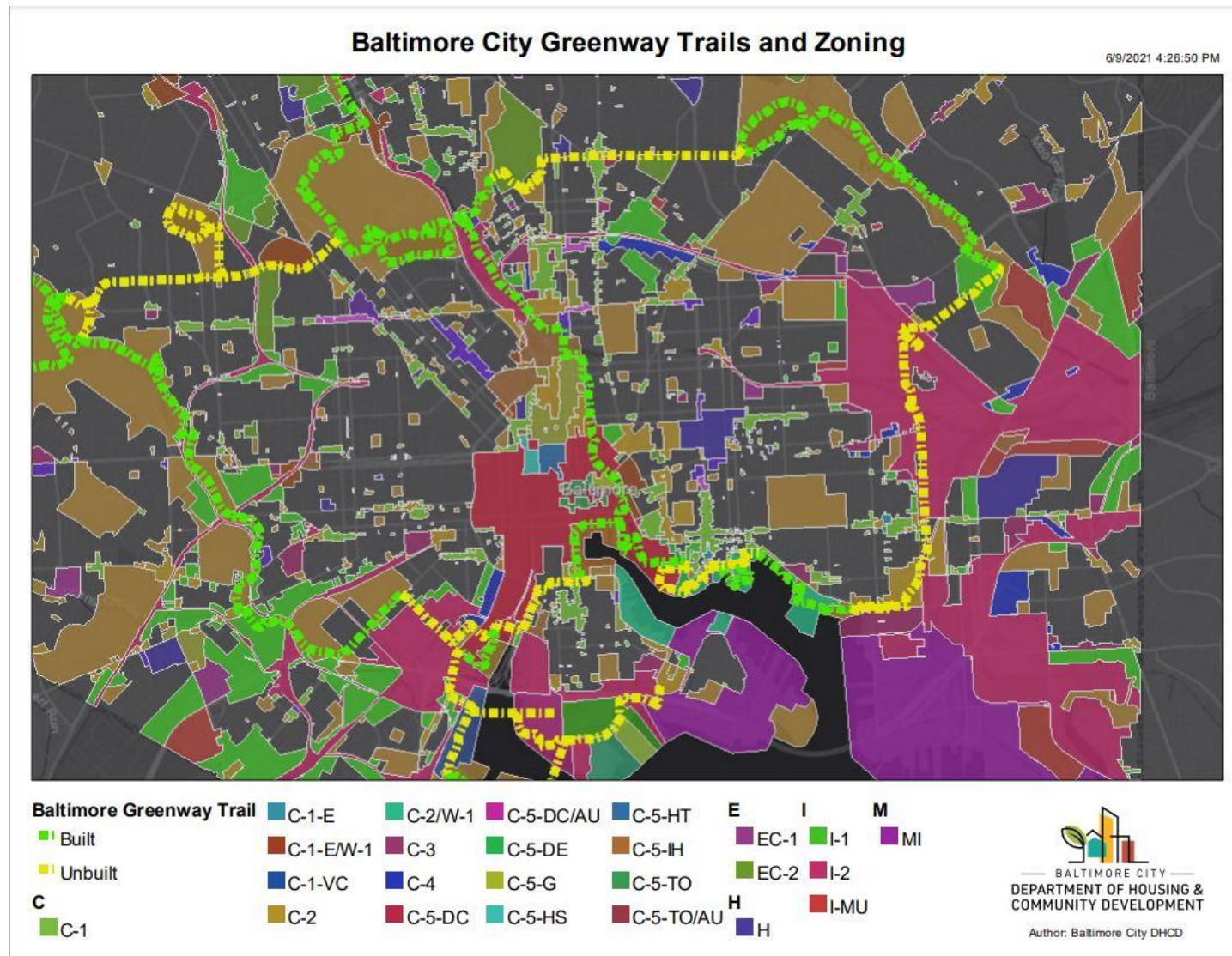


# Baltimore Greenway Trails





# Baltimore Greenway Trails

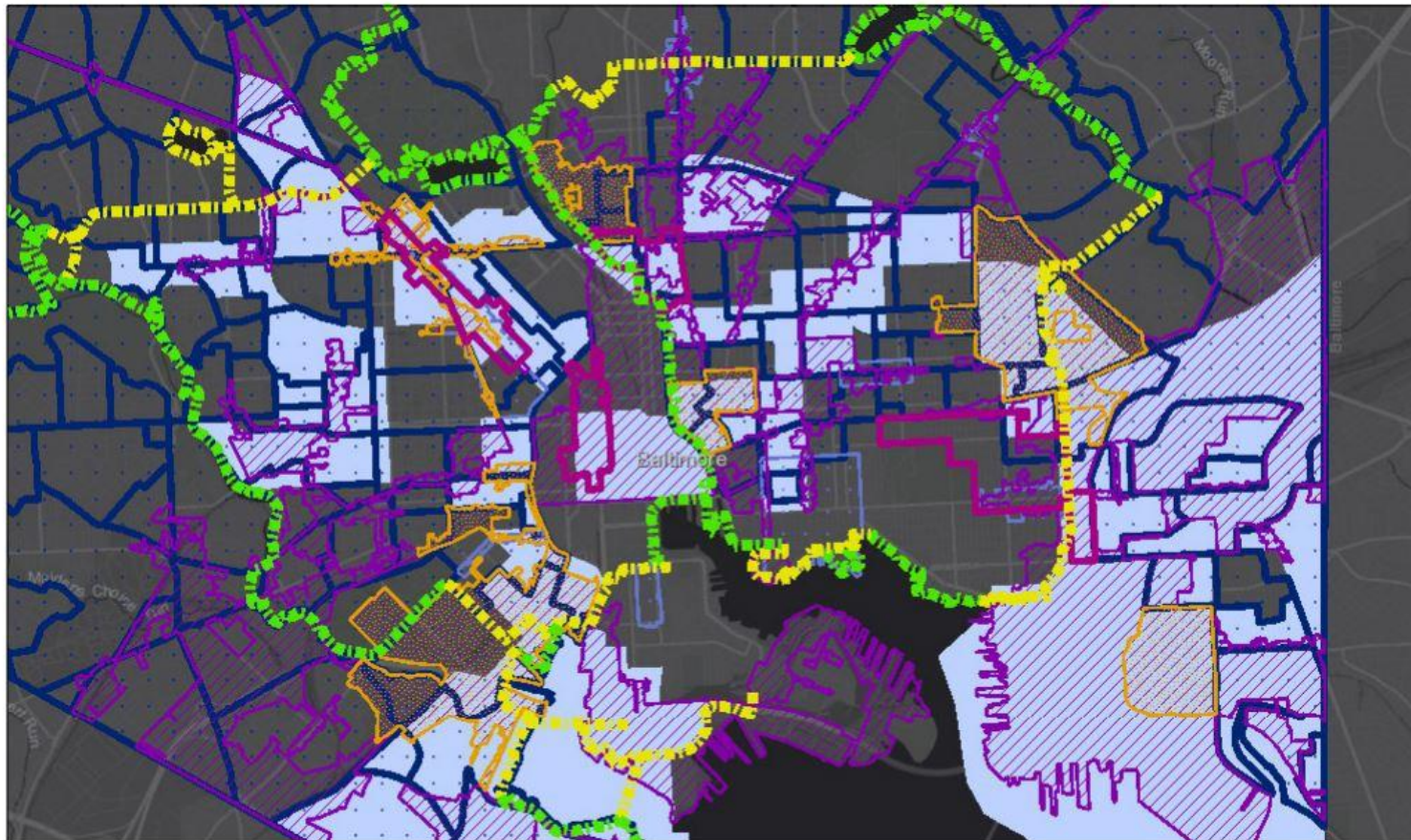




# Baltimore Greenway Trails

## Baltimore City Housing and Community Development

6/9/2021 4:09:32 PM



- Baltimore Greenway Trail**
- Built
  - Unbuilt
  - Arts District
  - EZ Focus Area
  - Enterprise Zone
  - Main Street District
  - NIIF Areas
  - Opportunity Zones



Author: Baltimore City DHCD

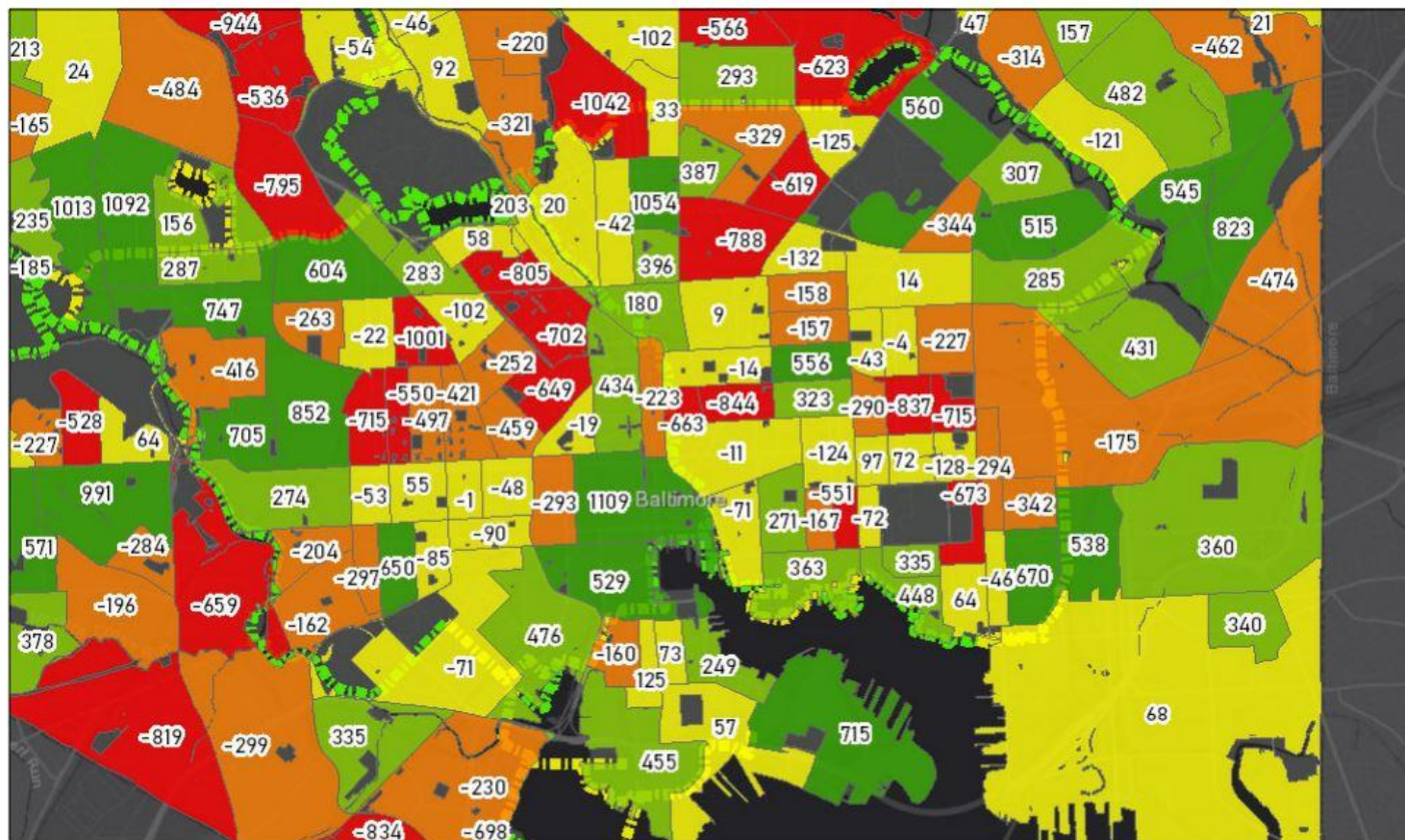




# Baltimore Greenway Trails

Baltimore City Greenway Trails and Population Change

6/9/2021 4:43:14 PM



Change in Population 2008-2012 vs. 2014-2018

-1296 - -501

-500 - -151

-150 - 150

151 - 500

Baltimore Greenway Trail

Built

Unbuilt

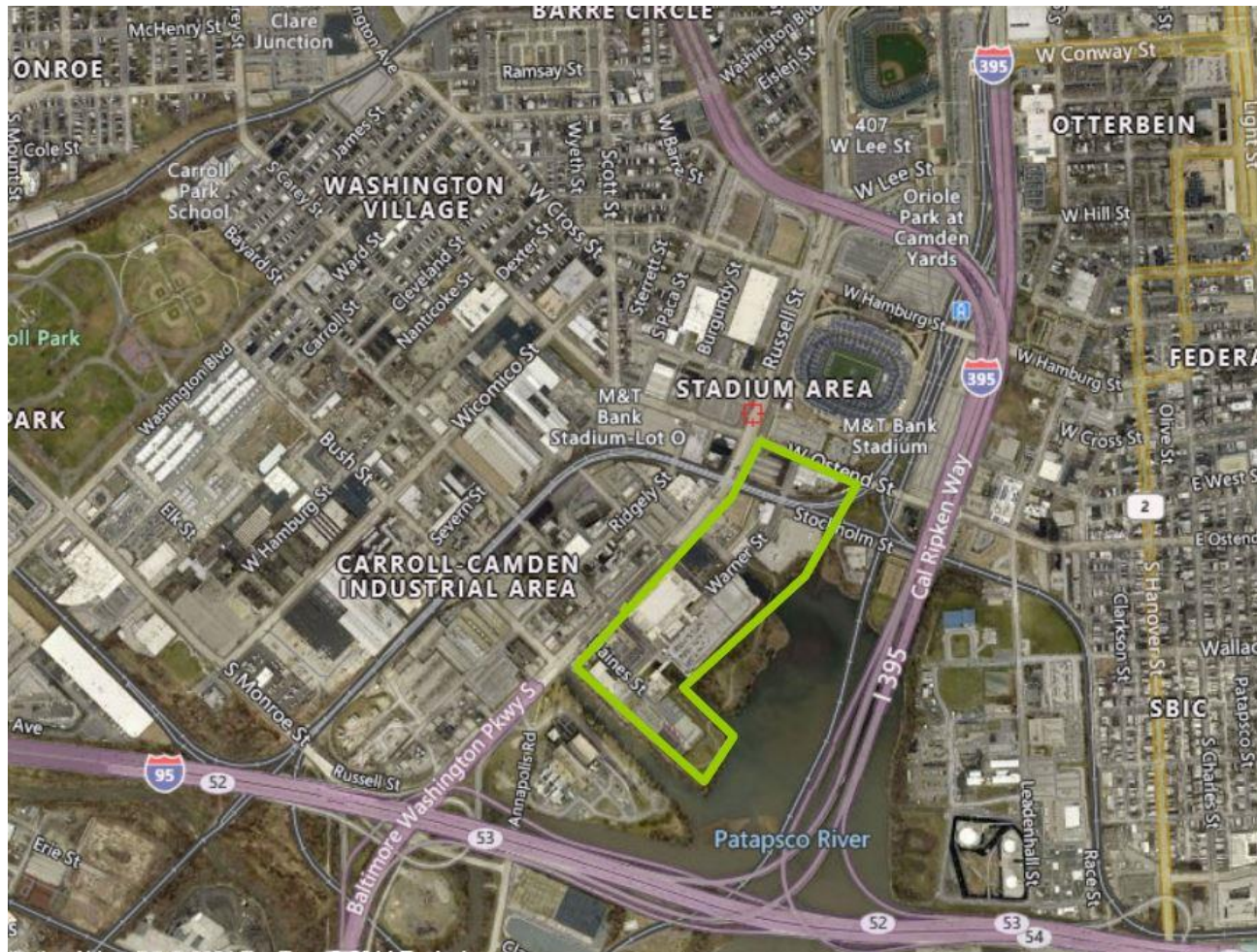
BALTIMORE CITY  
DEPARTMENT OF HOUSING &  
COMMUNITY DEVELOPMENT

Author: Baltimore City DHCD





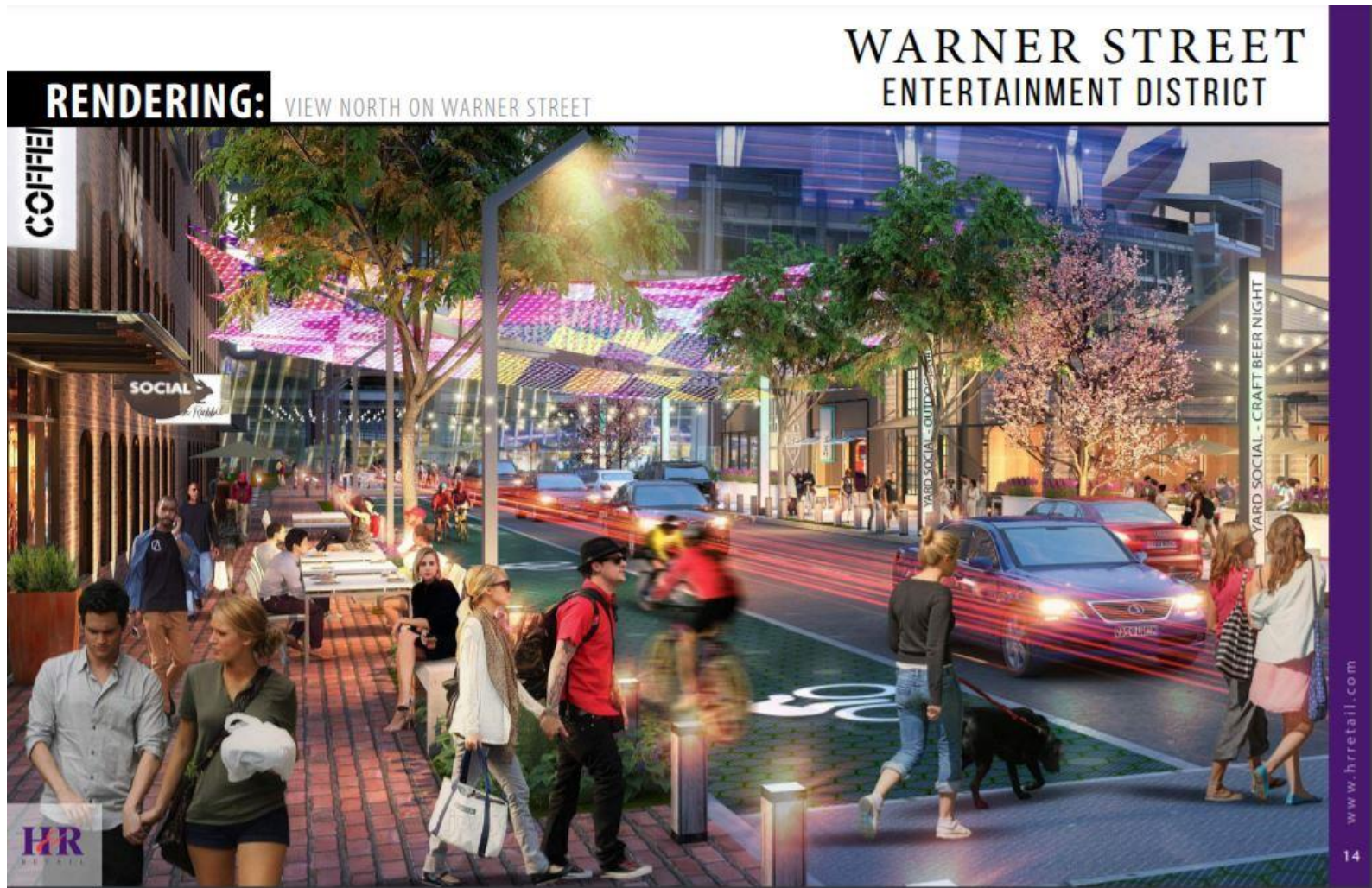
# Baltimore Greenway Trails





# Baltimore Greenway Trails

PLANNING - JUNE 2021



# Baltimore Greenway Trails

Jan 5, 2021



Buildings to Begin Delivering in 2022; More than \$9 Million Distributed as Part of Largest Community Benefits Agreement in Baltimore History



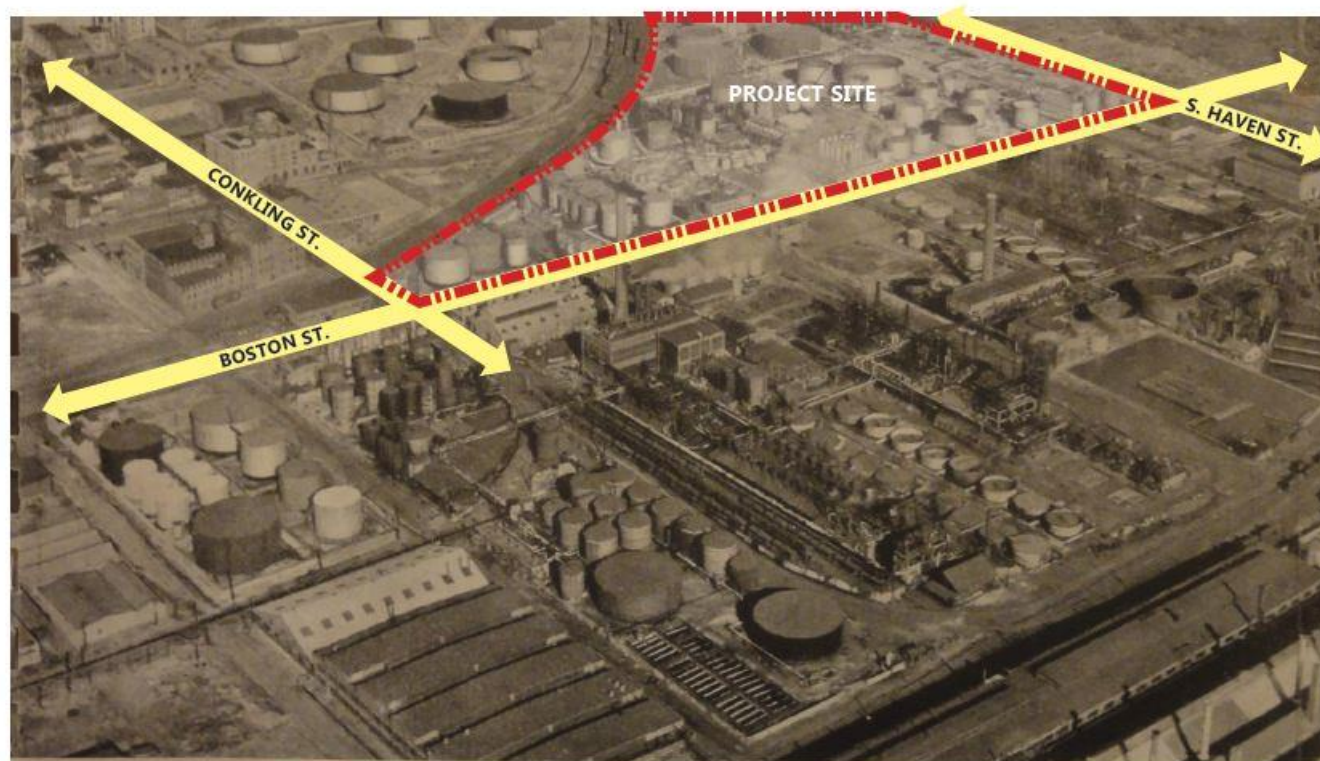
Baltimore City Department of Planning





# Baltimore Greenway Trails

Site History



THE COLLECTIVE AT CANTON  
Baltimore, Maryland



Kimley »Horn MOSELEY»WRIGHT

APRIL 4, 2019



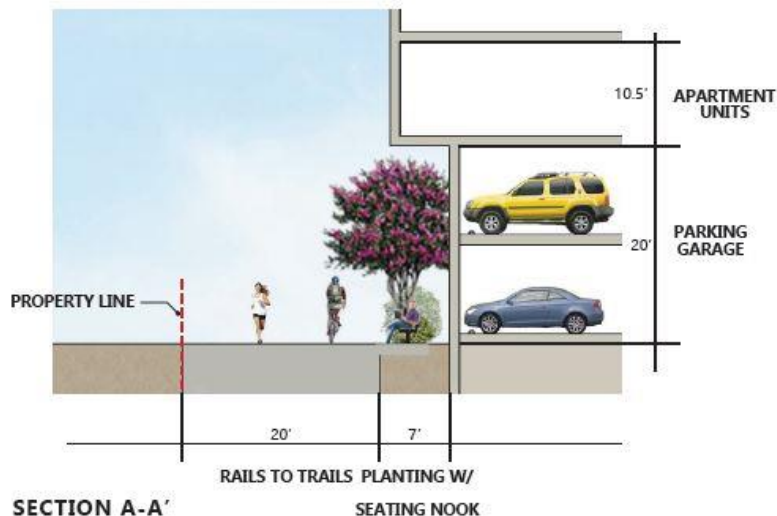
# Baltimore Greenway Trails

## SITE

A.) Allow space in front of the apartment's murals to be occupied by adding seating and elimination of foundation planting.

## RESPONSE

A.) Seating nooks are added at +/- 100' intervals; plantings modified to have only groundcover plantings (no shrubs) - groundcover is necessary to cover 4-7' of planting bed.



**GREYSTAR**  
**BREWERS HILL - PARCEL E**  
 1200 S HAVEN ST, BALTIMORE, MD  
 11/12/2019

RAILS TO TRAILS

Kimley **Horn** **BKV**  
 EXPERT ADVICE. EXPERIENCED BETTER. GROUP

21





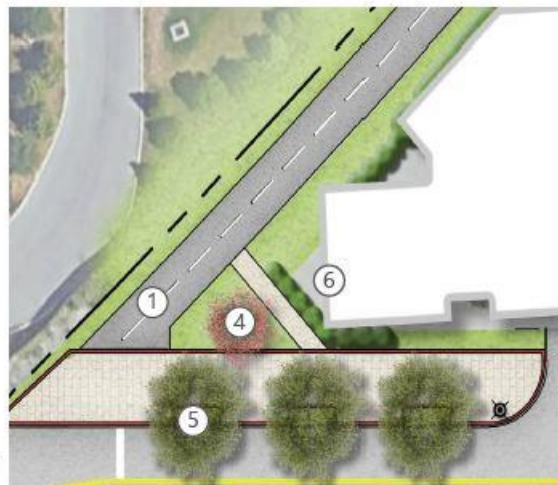
# Baltimore Greenway Trails

## LEGEND

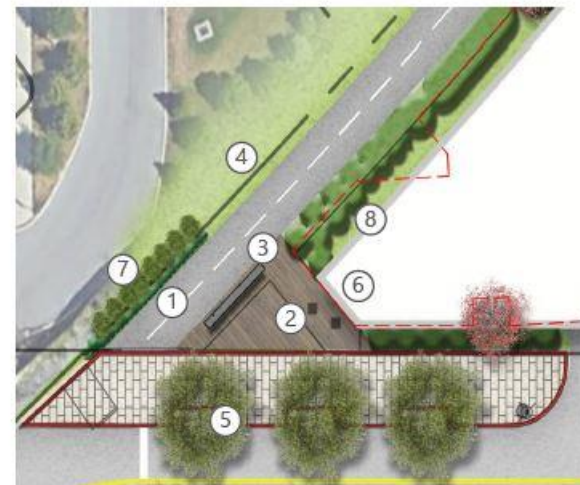
1. RAILS TO TRAILS
2. PLAZA
3. BENCH SEATING
4. FLOWERING TREES
5. TOONE ST. TREES
6. BIKE ROOM ACCESS
7. GATEWAY PLANTINGS
8. LOW LEVEL FOUNDATION PLANTINGS



\* Illustration shows new gateway plantings and low (under 2') plantings along building facade at Rails-to-trails to allow mural to read.



PREVIOUS SUBMISSION



CURRENT DESIGN



### SITE

A.) Allow the southwest corner of the building to address the connection to the trail; develop the corner landscape environment with the inclusion of the landscape strip.

### RESPONSE

A.) Corner plaza element added with seating that acknowledges the importance of corner architecture and creates a more welcoming landscape environment to the rail trail. Landscape plantings added to demarcate trail gateway.

**GREYSTAR**  
**BREWERS HILL - PARCEL E**  
 1200 S HAVEN ST, BALTIMORE, MD  
 11/12/2019

## CORNER ENLARGEMENT

**Kimley Horn** **BKV**  
 Experts More. Experience Better. **GROUP**

15





# Baltimore Greenway Trails

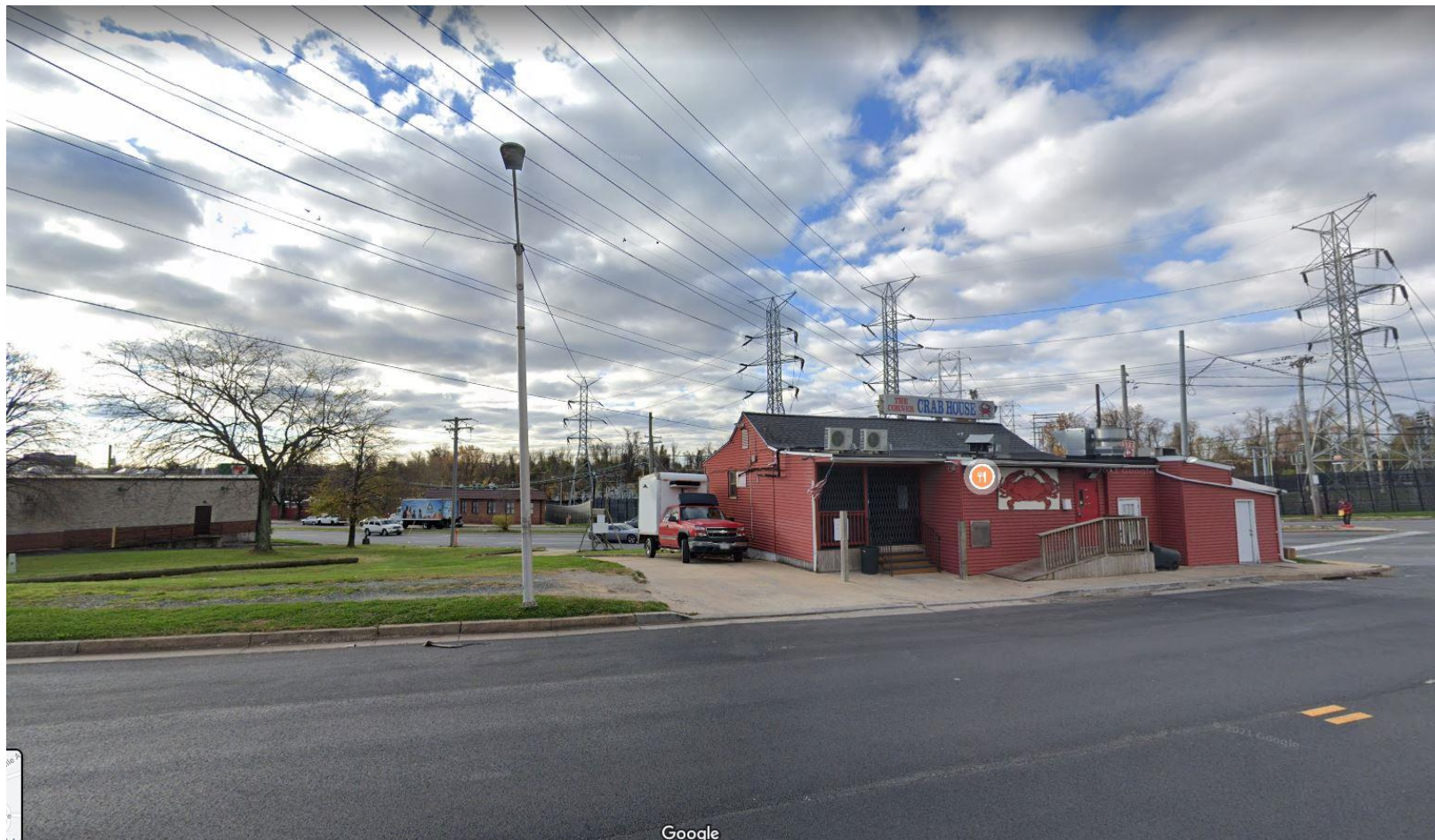
PLANNING - JUNE 2021





# Baltimore Greenway Trails

PLANNING - JUNE 2021





# Baltimore Greenway Trails

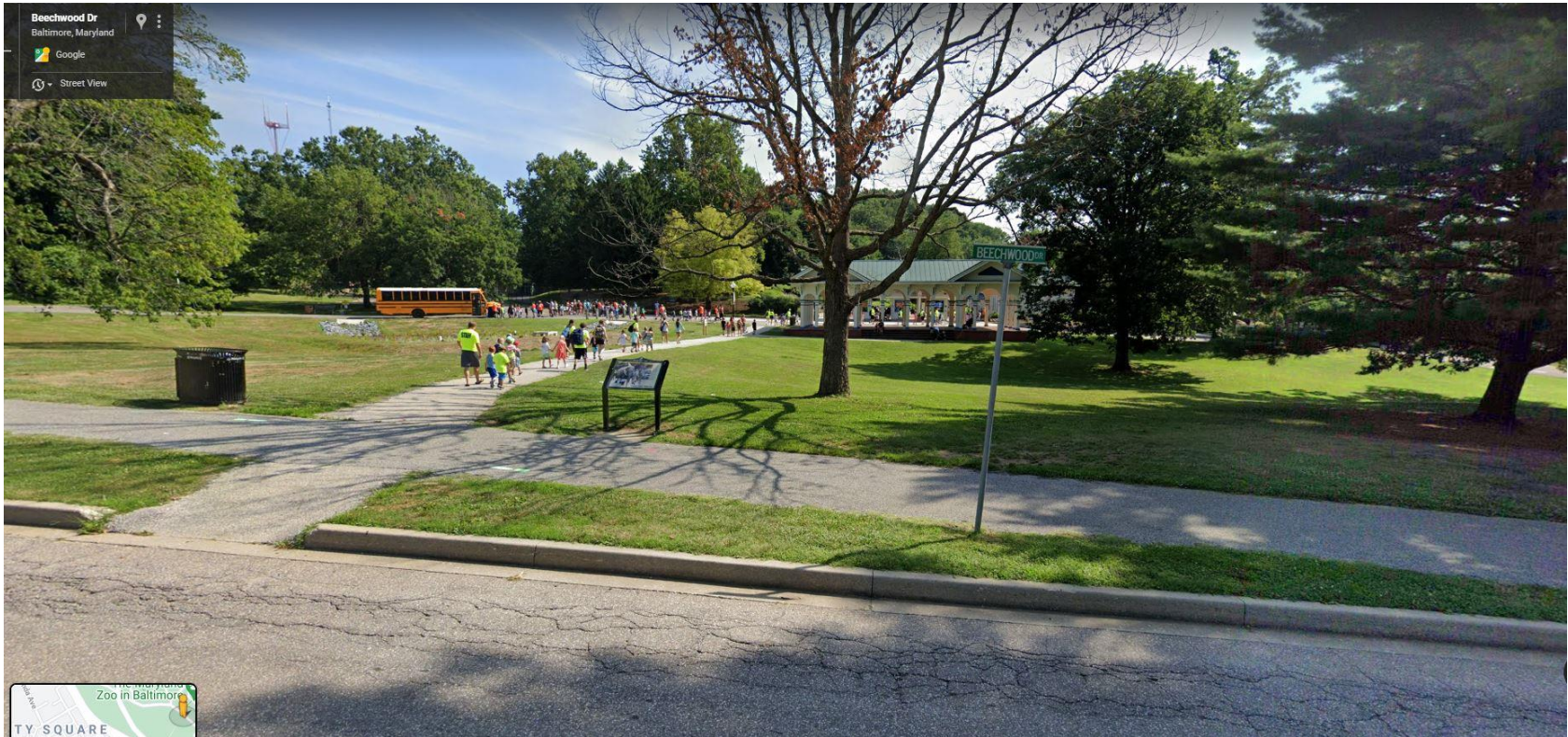
PLANNING - JUNE 2021





# Baltimore Greenway Trails

PLANNING - JUNE 2021





# Baltimore Greenway Trails

